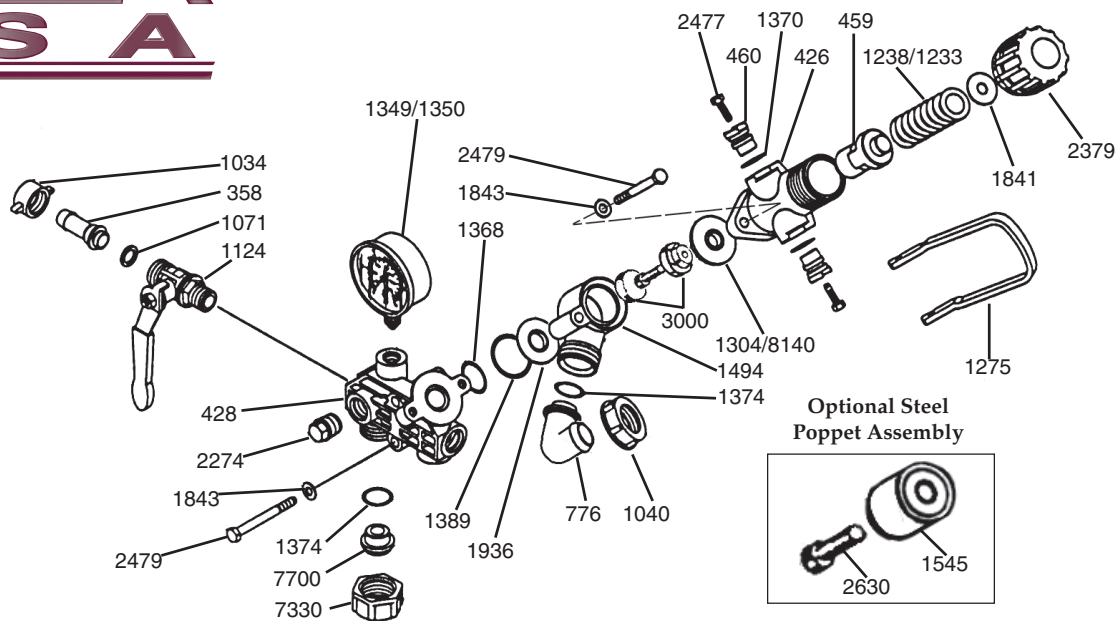




# 6010.24 & 6010.24/LP CONTROL UNIT

## Operating Instructions / Parts List



REF#	PART#	DESCRIPTION	QTY	REF#	PART#	DESCRIPTION	QTY
358	0202.19	1/2' Hose Barb	2	1370	1101.06	O-Ring	2
426	0204.40	Valve Body	1	1374	1101.12	O-Ring	2
428	0204.48	Main Body	1	*1389	1101.41	O-Ring	1
459	0205.10	Valve Cylinder	1	1494	1203.33	R.V. Body	1
460	0205.11	Valve Cylinder Cam	2	1545	1204.19	Steel Poppet (Optional)	1
776	0254.04	Bypass Elbow Hose Barb	1	1841	1403.06	Washer	1
1034	0604.09	Discharge Barb Nut	2	1843	1403.07	Washer	4
1040	0604.26	Bypass Barb Nut	1	*1936	1501.23	Seat	1
1071	0605.05	Gasket	2	2274	1603.44	Plug	2
1124	0608.45	Ball valve	2	2379	1801.17	Adjustment Knob	1
1233	0901.24	Spring	1	2477	1808.10	Bolt	2
1238	0901.47	300 PSI Spring (for 6010.24/LP)	1	2479	1804.74	Bolt	4
1275	0902.25	Dump Valve Lever	1	2630	1810.01	Bolt, Stainless Steel (Optional)	1
*1304	0903.26	Diaphragm	1	*3000	8701.04	Urethane Poppet Assembly	1
1349	GG-350	Gauge (for 6010.24/LP)	1	7330	0604.29	Nut	1
1350	GG-1000	Gauge	1	7700	1603.22	Plug	1
*1368	1101.04	O-Ring	1	8140	0903.42	Diaphragm, Viton (Optional)	1

**\*Parts included in Repair Kit (with Urethane Poppet) #8701.10**

Also available with Steel Poppet - **Repair Kit #8701.02**

The control unit features a normal control valve, manual dump valve, pressure control knob, glycerine pressure gauge, and two ball valve discharge ports. Optional 3/4" NPT discharge fittings are available. Consult UDOR U.S.A.

1. Before operating or re-operating the pump, push the manual dump valve lever (Ref. #1275) down, so the pump will start at zero pressure. **FAILURE TO DO SO WILL VOID PUMP WARRANTY.**
2. Turn pressure adjustment knob (Ref. #2379) counterclockwise to relieve spring tension.  
NOTE: Step 2 applies only to initial start-up, and is not necessary in daily operation of pump.
3. Start unit and let run until air is evacuated from system, when only liquid is expelled from the bypass line.
4. Return dump valve lever to the UP position. Open spray gun or spray boom and turn the pressure adjustment knob (Ref. #2379) clockwise until desired operating pressure is achieved.

### PROTECT PUMP FROM FREEZING

If freezing conditions exist, flush pump with a 50/50 mixture of antifreeze and water

### UDOR U.S.A., INC.

500 Apollo Drive  
Lino Lakes, MN 55014  
TEL. (651) 785-0666  
FAX. (800) 732-2670  
www.udorusa.com